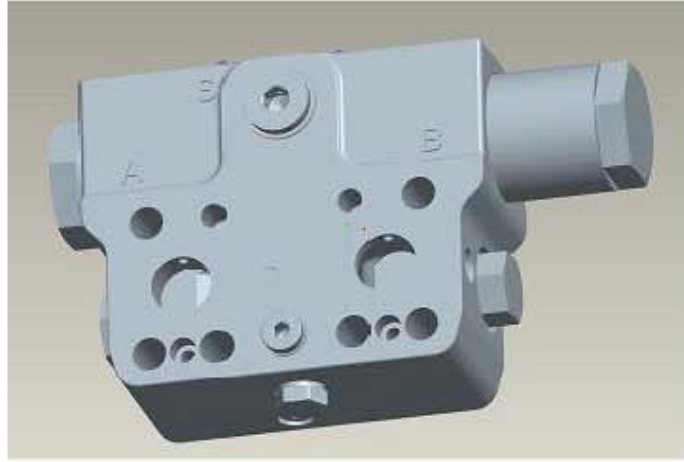


## BVD 平衡阀 Counterbalance valve



- 结构紧凑，节约安装空间，可以直接安装在L2FM(E)和L6VM(E)轴向柱塞马达
- 内置制动器释放阀，可选带或不带减压阀
- 通流阻力小，容积效率高
- 通标准模块化设计，可轻松进行优化选择
- Space-saving installation due to compact design and direct mounting on L2FM(E) and L6VM(E) axial piston motors
- Integrated brake release valve, with and without pressure reduction
- High efficiency due to low flow resistance
- Easy optimization options during commissioning due to modular design

### 型号说明 Type code

BVD	20	W	28	L	/	41	B	V	01	K01	D0800	S00
01	02	03	04	05		06	07	08	09	10	11	12

### 阀类型 Valve type

01	双作用平衡阀 Double acting counterbalance valve	BVD
----	---	-----

### 规格 Size

02	公称流量: 220L/min Nominal flow: 220L/min	20
	公称流量: 320L/min Nominal flow: 320L/min	25

### 控制范围 Control range

03	7...30bar (行走驱动) (For travel drive)	F
	20...40bar (卷扬或链轮驱动) (For winch or track drive)	W

### 工作油口 Working ports

04	规格 Size	L2FM/E-181	L2FE-171	L6VM-370	L6VM-380	
	20	● (80,90)	—	—	—	
—		● (107,125)	● (107)	—	28	
25		● (107,125,160)	—	—	● (160)	38

### 制动释放油口 Ports for brake release

05	带高压 With high pressure	S
	带高压减压阀 21 <sup>+4</sup> bar With reduced high pressure 21 <sup>+4</sup> bar	L
	带高压减压阀 40 <sup>+4</sup> bar With reduced high pressure 40 <sup>+4</sup> bar	H

### 系统标识 Series index

06	系列 4, 索引号 1 Series 4, index 1	41
----	-------------------------------	----

### 长端盖位置 Long cover position

07	B 侧(标准) Side B (Standard)	B
	A 侧 Side A	A

### 密封 Seal

08	氟橡胶 FKM	V
----	---------	---

### 阀芯类型 Piston type

09	公称流量的 100% 100% of nominal flow	01
	公称流量的 75% 75% of nominal flow	02
	公称流量的 50% 50% of nominal flow	03
	公称流量的 150% 150% of nominal flow	16

### 阀芯剩余开口 Residual opening in piston

10	无剩余开口(卷扬驱动无剩余开口) Without residual opening (obligatory for winches)	K00
	带剩余开口 (Φ1.2) With residual opening (Φ1.2)	K12
	带剩余开口 (Φ1.6) With residual opening (Φ1.6)	K16
	带剩余开口 (Φ1.8) With residual opening (Φ1.8)	K18
	带剩余开口 (Φ2.0) With residual opening (Φ2.0)	K20
	带剩余开口 (Φ2.5) With residual opening (Φ2.5)	K25

### 关闭过程的阻尼 Damping during closing

11	节流销(相当表面积) Throttle pin (Comparative surface area)	0.0836mm <sup>2</sup>	D0400
		0.1762mm <sup>2</sup>	D0600
		0.2798mm <sup>2</sup>	D0800

### 冲洗油道 Flushing cavity

12	堵住 Plugged	S00
	带节流孔 (Φ1.2) With orifice (Φ1.2)	S12
	带节流孔 (Φ1.6) With orifice (Φ1.6)	S16
	带节流孔 (Φ1.8) With orifice (Φ1.8)	S18

### 技术参数 Technical data

规格 Size	类型 Type	工作管路压力 Working pressure		公称流量 Nominal flow (L/min)	最大流量 Max. flow (L/min)	平衡阀压力(bar) Counterbalance valve pressure		减压阀(bar) Reducing valve		重量 Weight (kg)
		额定压力 Nominal pressure (MPa)	最高压力 Max. pressure (MPa)			开启 Cracking	全开 Fully Open	开启 Cracking	全开 Fully Open	
20	BVD.F	35	42	220	427	7	30	10 <sup>+4</sup>	21 <sup>+4</sup>	9
	BVD.W					20	40	20 <sup>+4</sup>	40 <sup>+4</sup>	
25	BVD.F	35	42	320	577	7	30	10 <sup>+4</sup>	21 <sup>+4</sup>	15
	BVD.W					20	40	20 <sup>+4</sup>	40 <sup>+4</sup>	

● =可供货 Available — =不可供货 Not available